

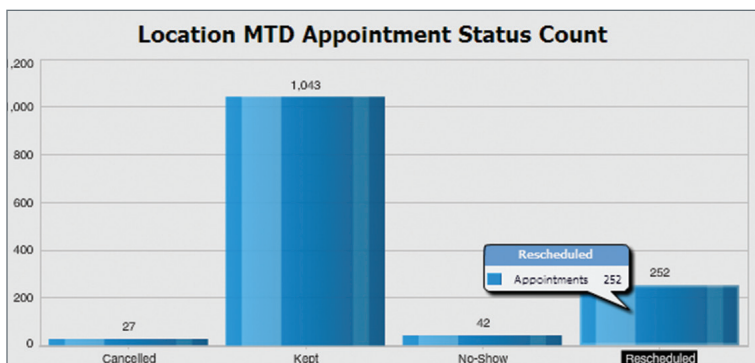
>>>
Data Sheet

NextGen® Dashboard



Instant Visibility into your Practice

If someone asked you how many of your patients with diabetes mellitus had their blood pressure controlled, would you be able to find the answer quickly? Could you find it and segment it by provider or by practice? Or, could you find how many encounters were scheduled month-to-date and how many of the appointments were canceled or kept, a no-show, or rescheduled?

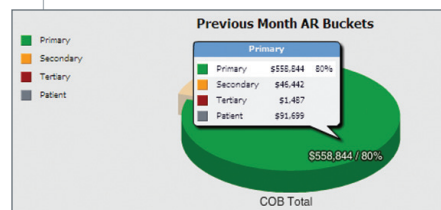


With NextGen® Dashboard, you can find the information quickly and easily, and display it in an easy-to-interpret, colorful and graphical format. If you want even more detail, you can drill down from one level to the next with the click of a mouse.

This provider-based tool can create graphical images that reflect the priorities of the entire practice or of a single person. You can even examine the same data in different formats or use the format to differentiate the data.

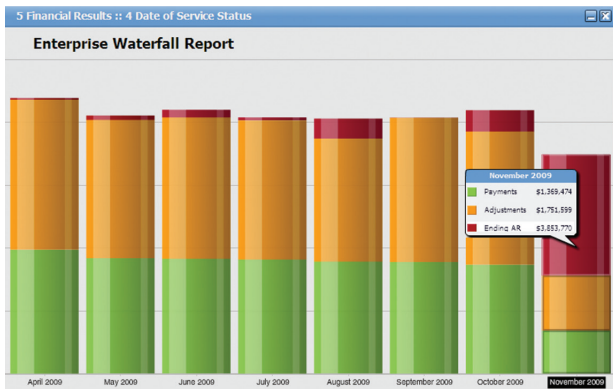
Requirements:

- NextGen Version 5.5.28 SP1 UD6 or greater
- KBM Version 7.6.1 or greater
- SQL Server® 2005 or higher
- NextGen Report Server
- Apache Tomcat Web server
- iDashboards application



NextGen Dashboard can help you improve the quality of patient care by identifying treatment opportunities and increasing overall productivity through better management of resources, both of which can ultimately enhance your practice's overall financial performance.

Equipped with multiple pre-programmed charts, NextGen Dashboard is ready to go at installation, and with its easy-to-use interface, users can quickly create and save their own personal charts. Plus, to create a more thorough picture of a practice's performance, data can be extracted from not only the NextGen database, but also from other data sources.



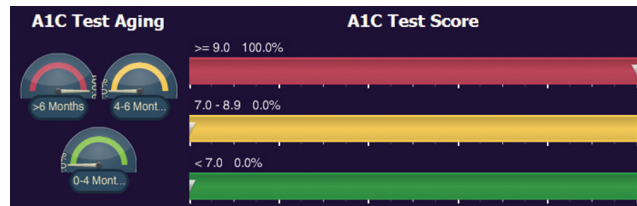
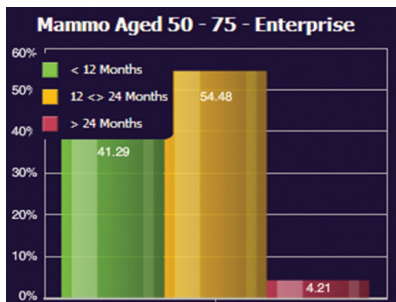
5 Financial Results :: 6 Top 25

Top 25 Codes by Volume With Average Reimbursement

Service Code	Total Volume	Average Reimbursement
99213	66,703	\$171.12
99214	26,243	\$136.75
36415	14,850	\$103.30
85025	13,444	\$870.85
90471	8,852	\$110.29
99212	6,683	\$56.23
99244	6,247	\$155.96
99243	6,014	\$136.60
90658	5,726	\$116.59
Summary	213,103	\$668.25

Practice's performance, data

To learn more about the NextGen Dashboard, contact us at 215-657-7010 or email sales@nextgen.com.



Identifying treatment opportunities

Development of additional client specific charts can be made available by NextGen Healthcare for an additional fee. For existing NextGen Healthcare clients using non-standard KBMs, there will be a clinical chart migration charge.

NextGen Healthcare Information Systems, Inc.

795 Horsham Road, Horsham, PA 19044

p: 215.657.7010 | f: 215.657.7011 | sales@nextgen.com | nextgen.com

For full information about the features and functions of NextGen Healthcare's products and services, please contact us at nextgen.com/contact.

© 2010 NextGen Healthcare Information Systems, Inc. All rights reserved. NextGen is a registered trademark and a service mark of NextGen Healthcare Information Systems, Inc. SQL Server is a registered trademark of Microsoft Corporation in the United States and/or other countries. All other marks are the property of their respective owners.

NextGen Healthcare strives to be a responsible steward of the environment. This paper is recycled and is certified to Forest Stewardship Council (FSC) standards, which promotes the responsible management of the world's forests.

NEXTGEN
HEALTHCARE